



Troytown Farm

St Agnes Isles of Scilly www.troytown.co.uk



In a stunning location, on the waters edge of the remote island of St Agnes, Troytown Farm enjoys incredible panoramic views across the Atlantic, taking in the rugged western rocks and the uninhabited island of Annet. St Agnes is a beautiful, unspoilt island, a perfect place to relax. The farm has three self-catering lets—The Cottage, The Croft and The Flat.

The Cottage

Sleeps 4



Troytown Cottage is a spacious, comfortable and luxurious let. It is a traditional granite and wooden building. The accommodation consists of one double and one twin bedroom, both with an en-suite wet-room style bathroom with walk-in shower, WC and basin. It is perfect for families or groups. A cot or extra bed can also be added.

The cottage has a modern, fully equipped kitchen with dishwasher, a large lounge-diner with comfortable seating, TV/DVD, dining table



and chairs for six. French doors lead out to a private, sheltered garden with picnic table, sun loungers and a BBQ.

The cottage combines Scillonian character with modern comforts such as under-floor heating and plenty of headroom! It is in a peaceful location, in the heart of our dairy farm, close to the islands beautiful beaches and breathtaking walks. Changeover day is a Saturday.



2011 Rates (per week for up to 4 people)

Up to 28th April & 29th Sept onwards	£580
28th April - 26th May	£690
26th May - 30th June	£840
30th June - 1st September	£950
1st September - 29th September	£690

Rates include bed linen, towels and transport for luggage across the island. One dog is accepted only by prior arrangement at a charge of £20 per week. All of our lets are non-smoking. An extra person can be accommodated by prior arrangement, at a charge of £80 per week (excluding infants). A travel cot and high chair are available if required.

The Croft

Sleeps 5

Troytown Croft is a spacious and comfortable let—perfect for holidays at any time of the year. A brand new let, with one double and one triple bedroom, a wet-room style bathroom with shower, WC and basin.

There is also a modern, well equipped kitchen with dishwasher, a large lounge-diner with log burner, comfortable seating area, digital TV & DVD player, dining table and chairs for six and views across the farm to the sea. Outside is a sheltered garden with picnic table, sun loungers and a BBQ.



Plans of The Croft.

Photos will go on the website in April.

The Croft has plenty of character, lots of light and modern comforts such as under-floor heating. It is in a peaceful location, in the heart of our dairy farm, close to the islands beautiful beaches and breathtaking walks. Changeover day is normally on a Tuesday.



2012 Rates (per week for up to 5 people)

1st May - 29th May	£690
29th May - 3rd July	£840
3rd July - 4th September	£950
4th September - 2nd October	£690
2nd October onwards	£580

Rates include bed linen, towels and transport for luggage across the island. One dog is accepted only by prior arrangement at a charge of £20 per week. All of our lets are non-smoking. An extra person can be accommodated by prior arrangement, at a charge of £80 per week (excluding infants). A travel cot and high chair are available if required.

Self-Catering Facilities

All of our lets are comfortably furnished and fully equipped :

Kitchen / Diner: Cooking facilities include an electric cooker & hob, fridge/freezer, microwave, kettle & toaster. High-chair provided on request.

Bathrooms: WC, basin, walk-in shower, electric towel rail and shaver point.

Living Area: Digital TV, DVD, CD/radio. We have a range of DVDs to borrow.

Bedrooms: Hair-dryer, bed-linen and towels are provided. Beds are made up for your arrival. A travel cot can be provided.

Laundry: On the nearby campsite, a coin-operated washing machine and a tumble drier are available. All lets also have an iron, ironing board and clothes airer.

Luggage Transfer: We collect your bags from St Agnes quay and deliver them to your let.

Groceries : The island's shop operates a pre-order service so a box of groceries can be delivered to your let on the day of your arrival.

Wi-Fi : Wi-Fi access is available at hot-spots around the farm.



The flat

Sleeps 2



Ideal for couples, the Flat is a self-contained wing of the old granite farmhouse with lots of character. There is cosy under-floor heating throughout the recently refurbished ground floor.

Downstairs are the entrance lobby, a shower room with basin and WC, open plan living room / kitchen / dining area (low ceiling with beams) with dining table for 2-3 people.

Upstairs there is a double bedroom with window seat and a landing area with shelves of books and games. Wi-Fi access is available in the flat.



room with window seat and a landing area with shelves of books and games. Wi-Fi access is available in the flat.



View from the Flat

Both the bedroom and living room have stunning sea-views towards the western rocks, Bishop Rock lighthouse and Atlantic Ocean.

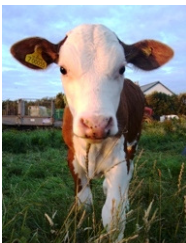
The flat has a sheltered garden with picnic bench, sun loungers and more spectacular views. The flat is situated in the heart of Troytown Farm and is close to the islands breathtaking walks and stunning coves. Changeover day in the Flat is usually Friday (Saturday after July).

2012 Rates (per week for up to 2 people)	
Up to 27th April & 28th Sept onwards	£370
27th April - 18th May	£495
18th May - 29th June	£540
29th June - 31st August	£595
31st August - 28th September	£495



Rates include bed linen, towels and transport for luggage across the island. We do not allow dogs in the Flat. All of our lets are non-smoking. In some circumstances an extra person can be accommodated in the Flat by prior arrangement at a cost of £80 per person (excluding infants).

The farm



Troytown is a working farm, with a small herd of Jersey and Ayrshire dairy cows. We also grow some fruit and vegetables and we rear calves and piglets for meat. We have a small farm shop on site which sells:

- Luxury dairy ice-cream and sorbets, fresh milk, yogurt, clotted cream and butter, all produced in our dairy.
- A delicious range of Troytown reared beef and pork — steaks, sausages, burgers, mince, joints and more!
- Seasonal vegetables and fruit grown on the farm.

Getting to and Around the Islands

You can get to the Isles of Scilly by ship or helicopter from Penzance, or by plane from Lands End, Newquay, Exeter, Bristol or Southampton. These all arrive at the main island of St. Mary's, and from there it is a fifteen-minute boat trip to St. Agnes.

Once you arrive at St Agnes quay, it is a short walk across the island to the farm. We will transport your luggage from the quay to your accommodation.

Once here, you can get easily get around the island on foot. Some roads around the farm are rough, so please bear this in mind if you have limited mobility.

There are regular boat trips from St Agnes to other islands and also fishing and nature trips. The best way to get around on the island is on foot.



Travel Contact Details

Isles of Scilly Travel - Skybus flights and the *Scillonian* ferry
www.ios-travel.co.uk 0845 710 5555

British International - Helicopter flights
www.islesofscillyhelicopter.com
01736 363871 or 01720 422665

St Agnes Boating - Inter-island travel, fishing, sight-seeing & nature trips
www.st-agnes-boating.co.uk
01720 422704

Parking in Penzance
IOS Parking - www.islesofscillyparking.co.uk
01736 332727 / 07724 879482

Scilly Parking - www.scillyparking.co.uk
01736 740277 / 07855 739060

Cattran's Car Park - 01736 363493

B&B in Penzance
The Dolphin Tavern - 01736 364106
www.dolphintavern.co.uk



How to book



We take self-catering bookings up to one year in advance and advise that you book as early as possible as any vacancies usually go quickly. We require a 25% deposit at the time of booking, the balance is due during your stay.

We occasionally offer special rates for short breaks or late availability. Our website has further information and up-to-date vacancies. If you wish to enquire about booking one of our lets please contact us.

www.troytown.co.uk

enquiries@troytown.co.uk

Tel: 01720 422360

Troytown Farm, St Agnes, Isles of Scilly, TR22 0PL